

Dear Parent/Carer,

Your child's school is taking part in a study (SIS) to monitor infection and transmission of coronavirus (COVID-19) in a sample of primary and secondary schools.

Why are we doing this study?



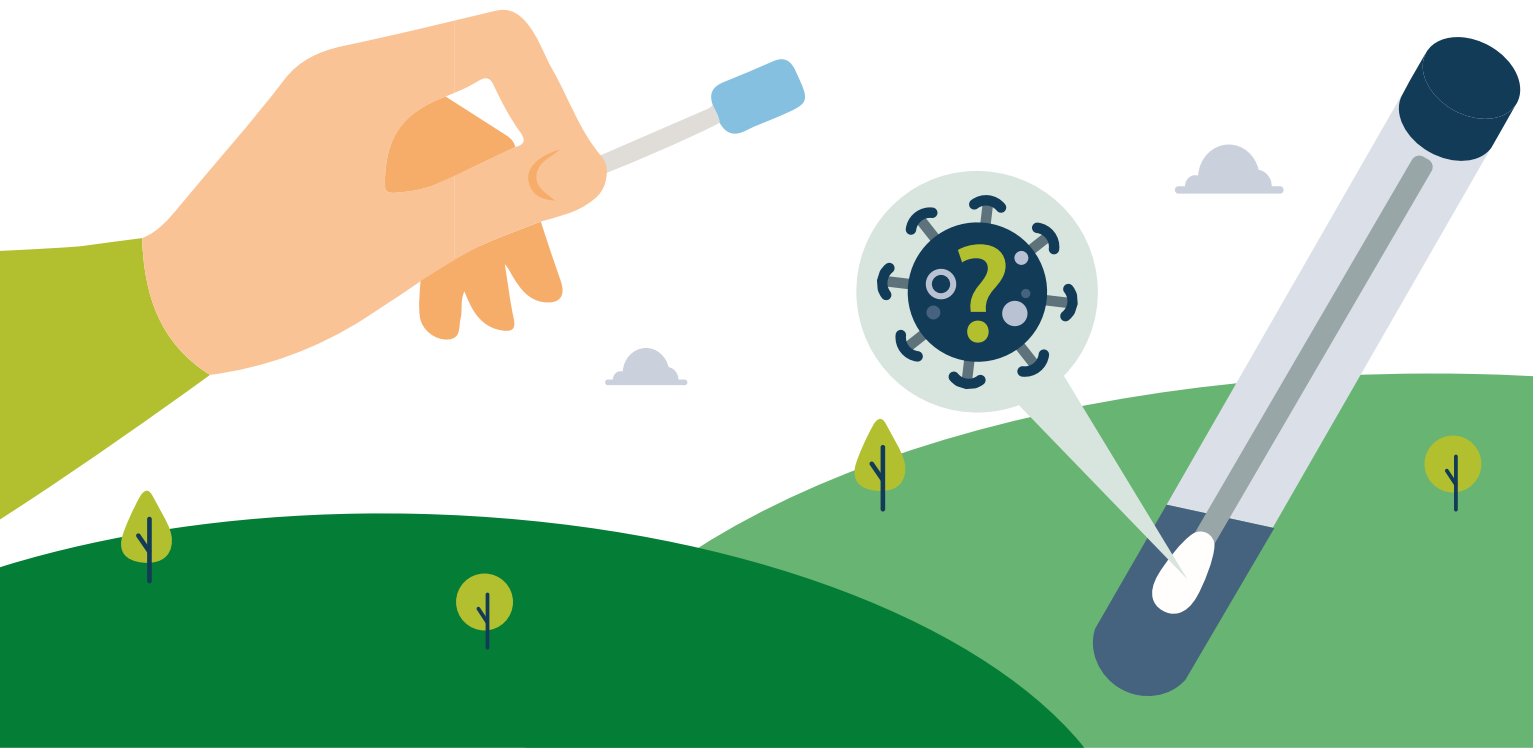
We want to find out how many school pupils and staff have COVID-19 infection, how many have already developed antibodies against the virus and how this changes over the course of the year. The information we collect will help inform policies to protect school pupils and staff.

The study is being conducted by Public Health England in partnership with the Office for National Statistics, and the London School of Hygiene and Tropical Medicine, working with the Department for Education and is funded by the Department for Health and Social Care. IQVIA, a healthcare company, is also supporting the study.

What does the study involve?

If you would like your child to take part, we would like you to complete a consent form and a short questionnaire about each of your children invited and all other household members. (See the next page for details on how to do this). Once this is completed, your child will be enrolled into the study. The study workers will visit your child's school once every half term of the current school year to **collect a nasal swab and an oral fluid (saliva) sample** to test for the virus and antibodies against the virus.

The study is voluntary, your child does not have to take part and you can withdraw from any round of testing without giving a reason.



How can my child take part?

Complete the steps below, they work best on a computer or tablet, and we are working to improve how the surveys appear on a smartphone:

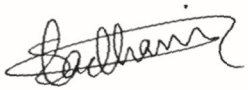
- Read the attached information about the study and what it means for your child and your family.
- Go to: <https://www.oc-meridian.com/Desktop/Portal/signup?id=cisschools&referralcode=142798> and create an account. As a parent, please simply select **'No'** to the initial questions asking if you are a student or member of staff and then fill in the remaining fields, providing consent as required. You will then receive two emails; one to validate your email address and one to confirm your registration.
- Please validate your email address by clicking on the link in the sign-up validation email. Login to the system by entering your email address and password.
- Click on **'Child Registration Page'** and register your child/children, providing consent as required. **Your school code is:**
142798
- After registering your child/children, click on **'Home'** and complete the enrolment survey for each child.

Participants that test positive for the virus following the nasal swab will be contacted by NHS Test and Trace as soon as possible. All test results will be provided on the Schools Infection Survey (SIS) Portal. You will be notified by email as soon as the results are available.

If you have any questions, please contact the IQVIA helpline on **0800 917 9679** or email iqvia.schoolinfectionsurvey@nhs.net


Thank you for contributing to this important study. Your help will inform policies to manage risks of transmission in schools and identify ways to protect children and staff.

Yours faithfully,




Shamez Ladhani

Public Health England



Iain Bell

Office for National Statistics



James Hargreaves

London School of Hygiene & Tropical Medicine



Consultant Epidemiologist

Population and Public Policy

Professor of Epidemiology and Evaluation